



# Neurensin-1 Polyclonal Antibody

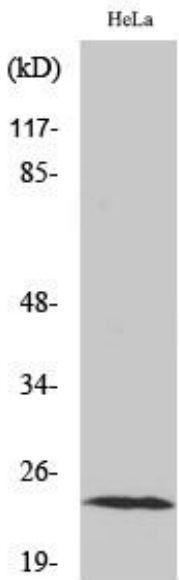
<b>Catalog No</b>	YP-Ab-04038
<b>Isotype</b>	IgG
<b>Reactivity</b>	Human;Mouse;Rat
<b>Applications</b>	WB;IHC;IF;ELISA
<b>Gene Name</b>	NRSN1
<b>Protein Name</b>	Neurensin-1
<b>Immunogen</b>	The antiserum was produced against synthesized peptide derived from human NRSN1. AA range:121-170
<b>Specificity</b>	Neurensin-1 Polyclonal Antibody detects endogenous levels of Neurensin-1 protein.
<b>Formulation</b>	Liquid in PBS containing 50% glycerol, 0.5% BSA and 0.02% sodium azide.
<b>Source</b>	Polyclonal, Rabbit,IgG
<b>Purification</b>	The antibody was affinity-purified from rabbit antiserum by affinity-chromatography using epitope-specific immunogen.
<b>Dilution</b>	WB: 1/500 - 1/2000. IHC: 1/100 - 1/300. ELISA: 1/40000.. IF 1:50-200
<b>Concentration</b>	1 mg/ml
<b>Purity</b>	≥90%
<b>Storage Stability</b>	-20°C/1 year
<b>Synonyms</b>	NRSN1; VMP; Neurensin-1; Neuro-p24; Vesicular membrane protein of 24 kDa; Vesicular membrane protein p24
<b>Observed Band</b>	25kD
<b>Cell Pathway</b>	Membrane ; Multi-pass membrane protein . Cell projection, neuron projection .
<b>Tissue Specificity</b>	Expressed in brain. Not detectable in other tissues tested.
<b>Function</b>	function:May play an important role in neural organelle transport, and in transduction of nerve signals or in nerve growth. May play a role in neurite extension.,similarity:Belongs to the VMP family.,subcellular location:Localizes mainly to neurites.,tissue specificity:Expressed in brain. Not detectable in other tissues tested.,
<b>Background</b>	function:May play an important role in neural organelle transport, and in transduction of nerve signals or in nerve growth. May play a role in neurite extension.,similarity:Belongs to the VMP family.,subcellular location:Localizes mainly to neurites.,tissue specificity:Expressed in brain. Not detectable in other tissues tested.,
<b>matters needing attention</b>	Avoid repeated freezing and thawing!



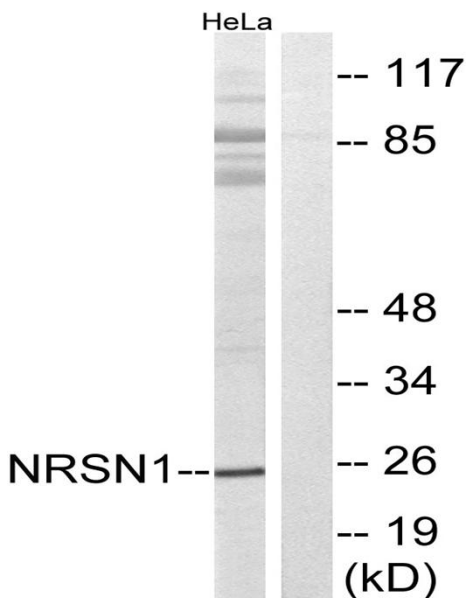
Usage suggestions

This product can be used in immunological reaction related experiments. For more information, please consult technical personnel.

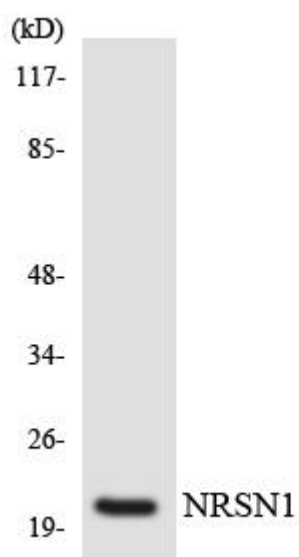
Products Images



Western Blot analysis of various cells using Neurensin-1 Polyclonal Antibody



Western blot analysis of lysates from HeLa cells, using NRSN1 Antibody. The lane on the right is blocked with the synthesized peptide.



Western blot analysis of the lysates from 293 cells using NRSN1 antibody.